



# BSW Estates: Strategy and Governance

30<sup>th</sup> January 2020

**Working together:**

NHS Bath and North East Somerset Clinical Commissioning Group

NHS Swindon Clinical Commissioning Group

NHS Wiltshire Clinical Commissioning Group

# Contents

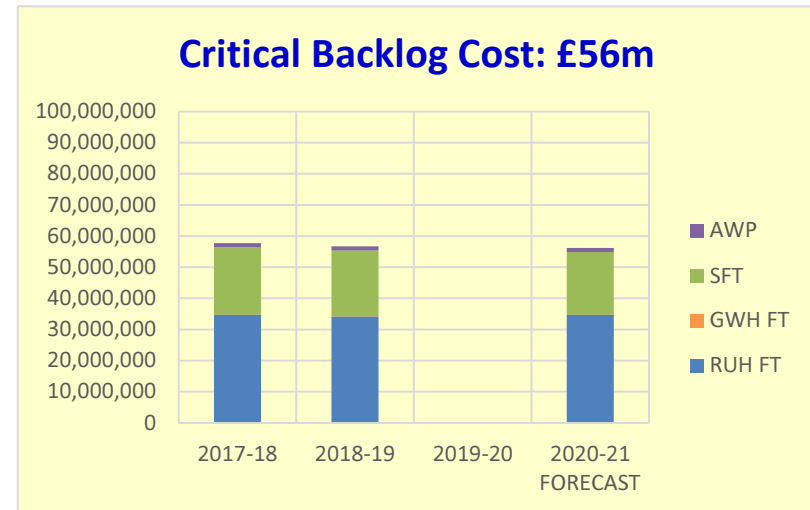
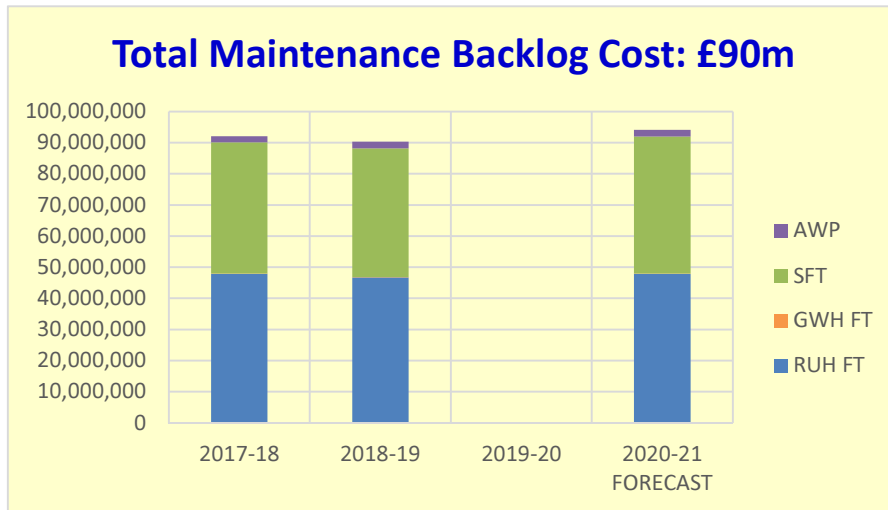
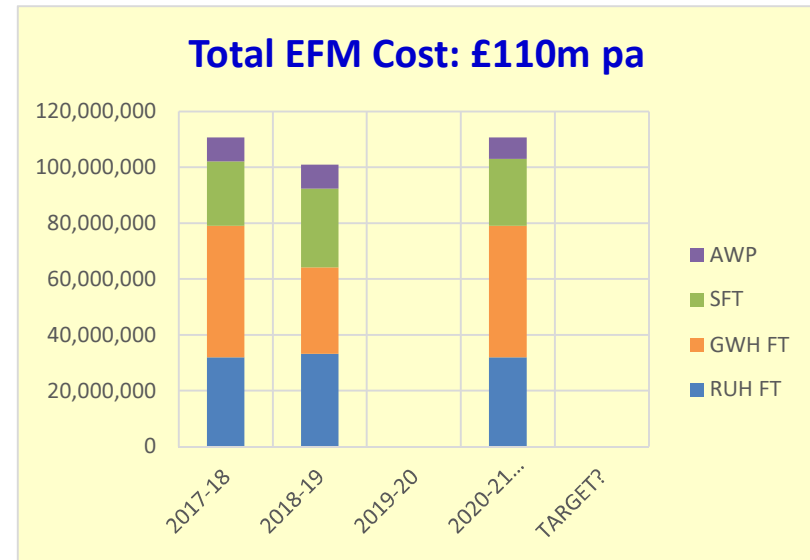
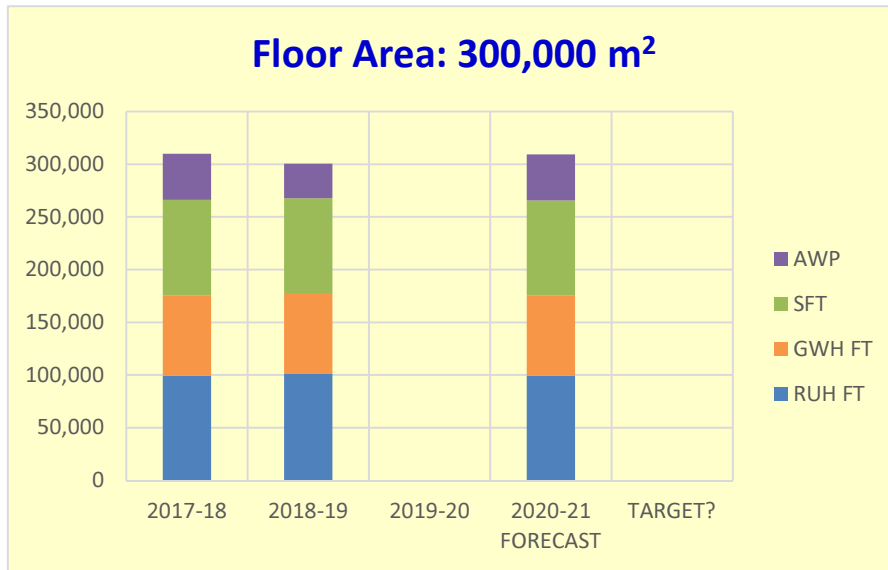
- 1) Introduction
- 2) BSW Estate Performance
- 3) Developing the Estates Strategy
- 4) New BSW CCG Governance Arrangements
- 5) BSW CCG Strategic Estates Group
- 6) Next Steps

# Introduction



- A BSW estates workshop was held on 15<sup>th</sup> November 2019 at which further consideration was given to the need for an updated **BSW STP/ICS-wide estates strategy** during which it was proposed that place-based estates strategies will be developed for BSW, recognising that:
  - the acute and mental health providers are in more advanced stages of developing their estates strategies
  - there are a number of primary care and community estates premises issues that urgently require addressing
  - there is a national requirement for a Primary Care Estates Strategy
  - there is an imperative to address existing estates risks and future needs
  - future waves of national capital bids will require a supporting strategy
  - further join up of estates needs across different health and social care providers is required
- A presentation was taken to the BSW CCG Governing Bodies on 2<sup>nd</sup> December 2019 outlining proposals for the development of a **BSW CCG estates strategy** and governance.

# BSW Estate performance – an aggregated view



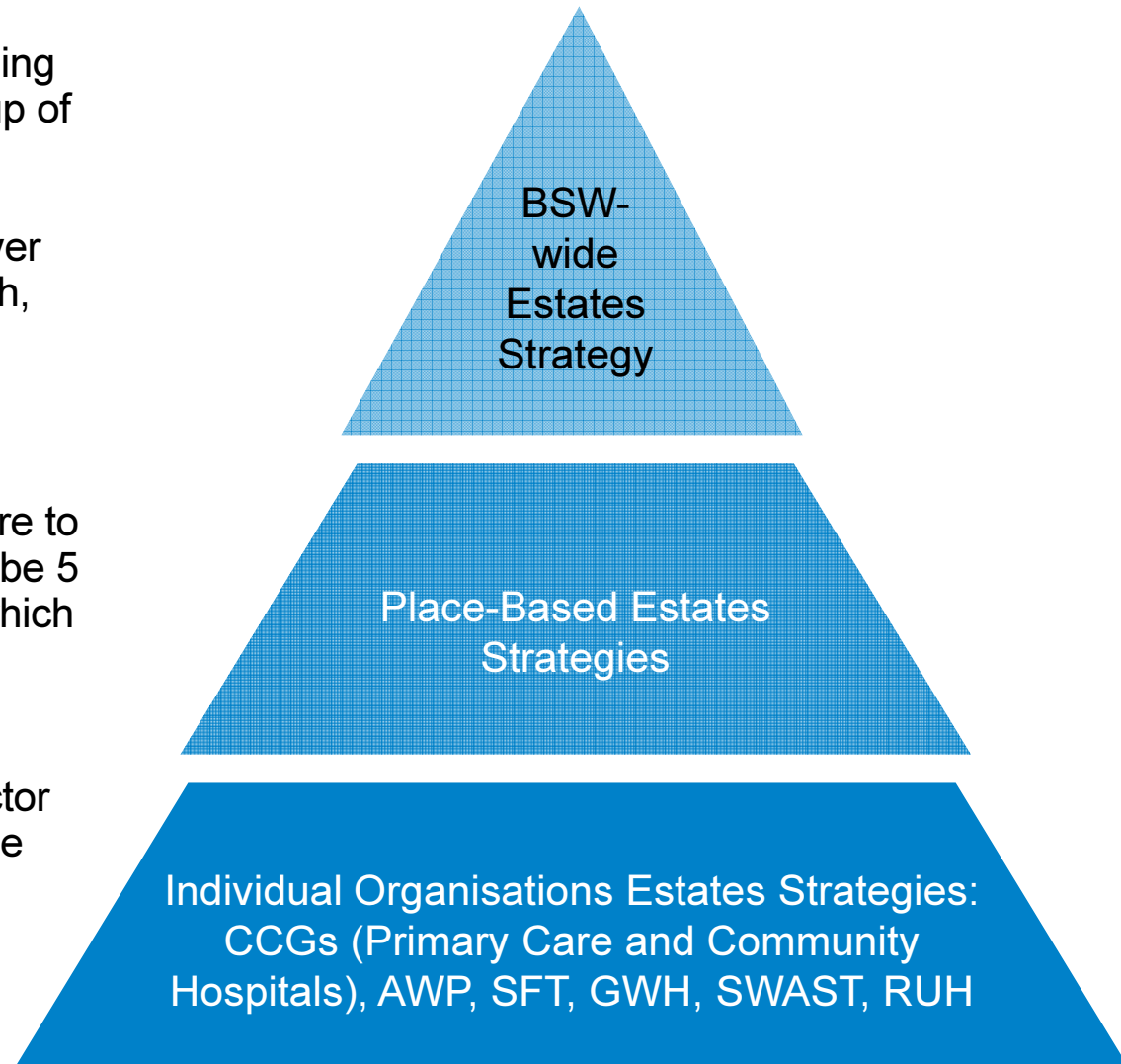
# Developing the BSW Estates Strategy

- A series of CCG-level and STP/ICS-wide estates strategic documents have been developed in recent years
- Any future estates strategy will need to be clearly aligned to the BSW Long Term Plan and the development of Primary Care Networks, including estates plans for each distinct geographical area and estates plans for Primary Care Networks, based on identified future estates needs
- Consideration will be given to service provision both within and across geographical areas reflecting clinical priorities across the STP
- The estates strategy will include
  - an assessment of the existing estates for primary care, community health, acute, ambulance and mental health services
  - alignment with social care and other key stakeholders
  - estates needs, taking account of the “operational performance” and “strategic fit” of the existing estate, current gaps, demographic changes and future service models
  - recommendations for action, including a pipeline of future capital schemes, assessed and prioritised through a transparent process

# Developing the BSW Estates Strategy



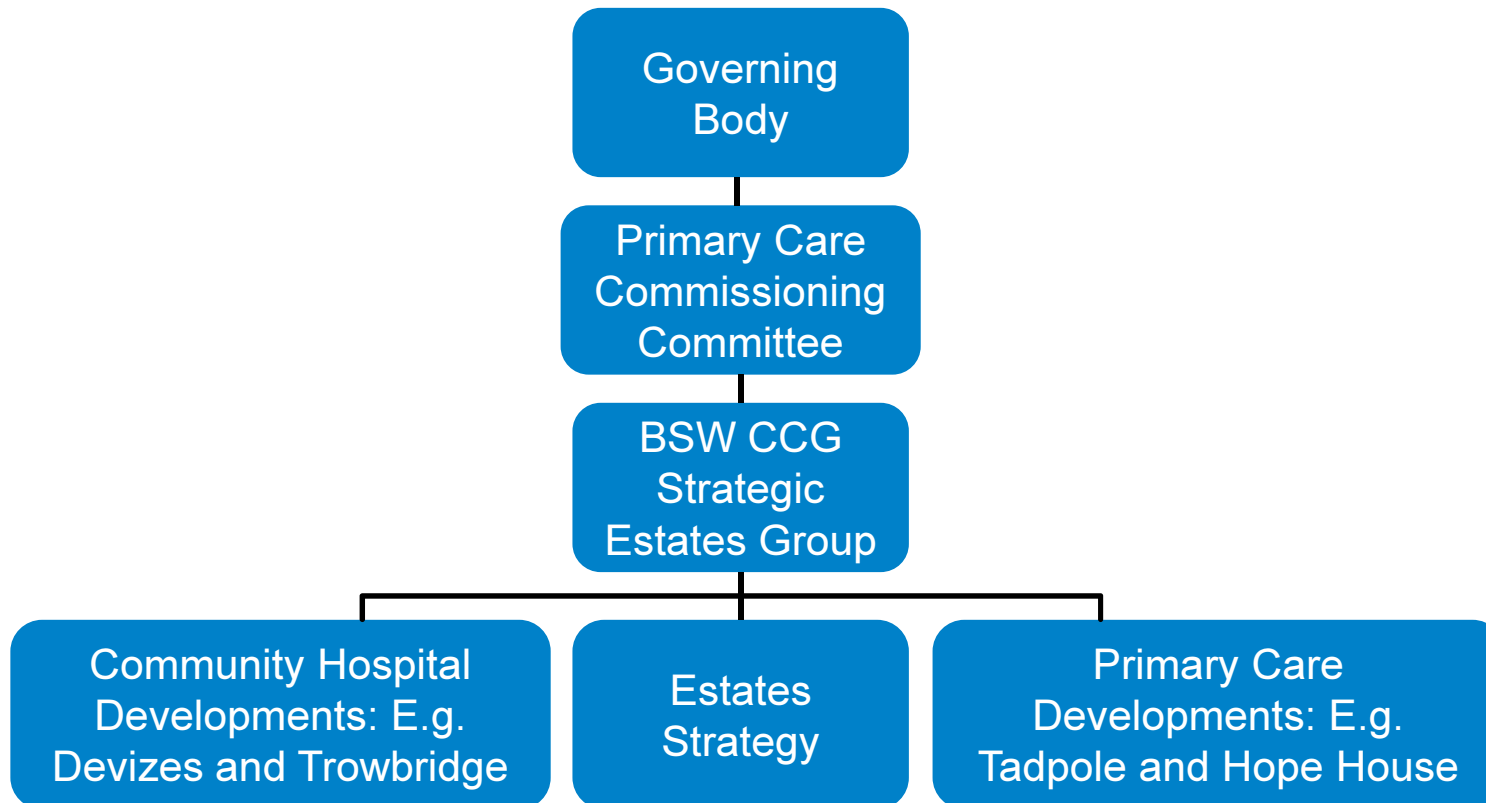
- There will be a single overarching BSW Estates Strategy made up of place-based estates plans
- The place-based plans will cover primary care, community health, acute, ambulance and mental health services
- The place-based plans geographical areas/localities are to be confirmed, but expected to be 5 – 6 areas (Swindon, BaNES which could be 2 areas and Wiltshire which could be 3 areas)
- Interactions to other public sector estate opportunities through the One Public Estate structures



# Estates Governance



- A new BSW CCG Strategic Estates Group is being formed, replacing existing CCG-level forums
- Membership will be modelled on the former Wiltshire Strategic Estates Group, with the Medical Director of the Governing Body chairing the new group.
- Reporting arrangements will be as shown:



# BSW CCG Strategic Estates Group



- The principal work areas BSW CCG Strategic Estates Group will be:
  - Strategic estate planning
  - Capital projects direction
  - Assessment of backlog maintenance and results of six facet survey
  - Premises assurance
  - Primary care premises and community hospital development pipeline
  - General property advice and support from NHSPS



# Next Steps



- HWB requested to note the proposed approach to develop:
  - a ***place-based/locality BSW STP/ICS Estates Strategy***
  - Bring together and update the Primary and Community Estates requirements across the three CCGs into a ***BSW CCG Estates Strategy***
  - a new ***BSW CCG Strategic Estates Group***
- The key actions are to:
  - Set up project groups with relevant service leads to take forward the BSW STP/ICS place-based/locality estates plans (BaNES and South Wiltshire established)
  - Develop programme/timeline for completing the BSW STP/ICS place-based/locality strategies
  - Complete validation of estates data for the CCG's Wiltshire area
  - Proceed with the estates data collection exercise for BaNES and Swindon CCG areas
- It is expected that 3 draft PCN estate plans that will form the basis of the BSW CCG Estates Strategy will be produced by the end of March 2020